

# HATFIELD *OPEN* *DAY*

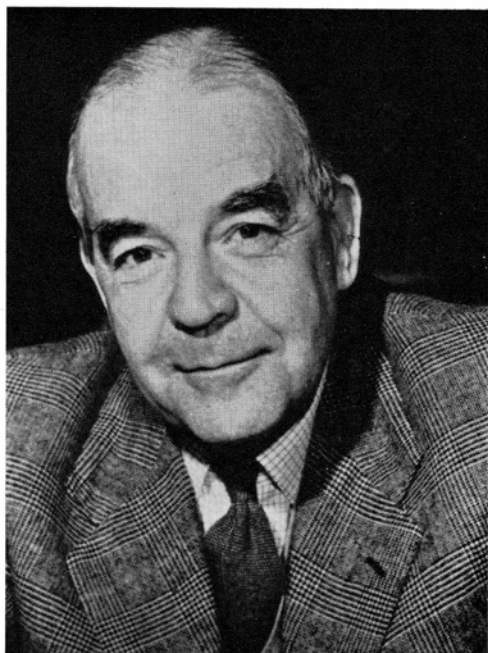


**SATURDAY, JULY 13, 1968**



**HAWKER SIDDELEY AVIATION LIMITED**

A Hawker Siddeley Company



**A message from**

AIR CHIEF MARSHAL

**SIR HARRY BROADHURST,**

G.C.B., K.B.E., D.S.O., D.F.C.,  
A.F.C., R.A.F. (Retd)

Deputy Managing Director  
and Chief Executive (Civil) of  
Hawker Siddeley Aviation Limited

I welcome you on behalf of all at Hawker Siddeley Aviation Limited, Hatfield.

Many parts of the factory are open for your inspection. We have endeavoured to put on an interesting and instructive show that is representative of our contribution to the large Group to which we belong.

I wish you a happy day—in the factory, during the flying displays and at our Sports.

---

The aircraft factory at Hatfield is one of the major design and production facilities of Hawker Siddeley Aviation Limited. Many areas of this establishment are open to you today. The map on another page, with larger plans displayed around the factory, indicates those departments which you are invited to inspect.

This factory is chiefly concerned at the present time with the production of our Trident jet airliner. As you go round the works you will see a number of these aircraft under construction; mostly they are the longer-range 2E version for British European Airways. Where possible, demonstrations of techniques have been arranged.

Among other work in progress in the plant is the manufacture of a number of components for the HS 125 business jet, which is assembled at Chester, and the HS 801 Nimrod, the maritime reconnaissance version of the Comet jet airliner, which is being produced at both the Chester and Manchester factories of Hawker Siddeley Aviation Limited.

In various parts of the factory advanced production processes are in use, and you are recommended to visit the Spar and Cramic Milling Shop, the Press and Foundry, the Metal Forming Shop and the Redux Department with its 3,000-ton metal-bonding press, one of the industry's largest machine tools.

A programme of flying by vintage and more modern light aircraft will start at approximately 11 a.m. and will last about one hour.

The factory premises will be closed at 1 p.m.

During the afternoon, *although the factory buildings will be closed*, there will be a further programme of flying commencing at approximately 2.15 p.m. and lasting about two hours. At the same time the Hawker Siddeley Aviation Sports Club will be holding its annual Sports Day to which admission is free.

Refreshments and luncheons may be obtained in the Cafeteria (see map).

The above arrangements do not include Hawker Siddeley Dynamics Ltd or any of the Manor Road installations.



The HS 748, powered by Rolls-Royce Dart engines, seats up to 62 passengers and is in airline service throughout the world.



The HS 125, a 6- to 10-seat business jet, of which more than 150 are in service in seventeen countries, over 80 in North America.



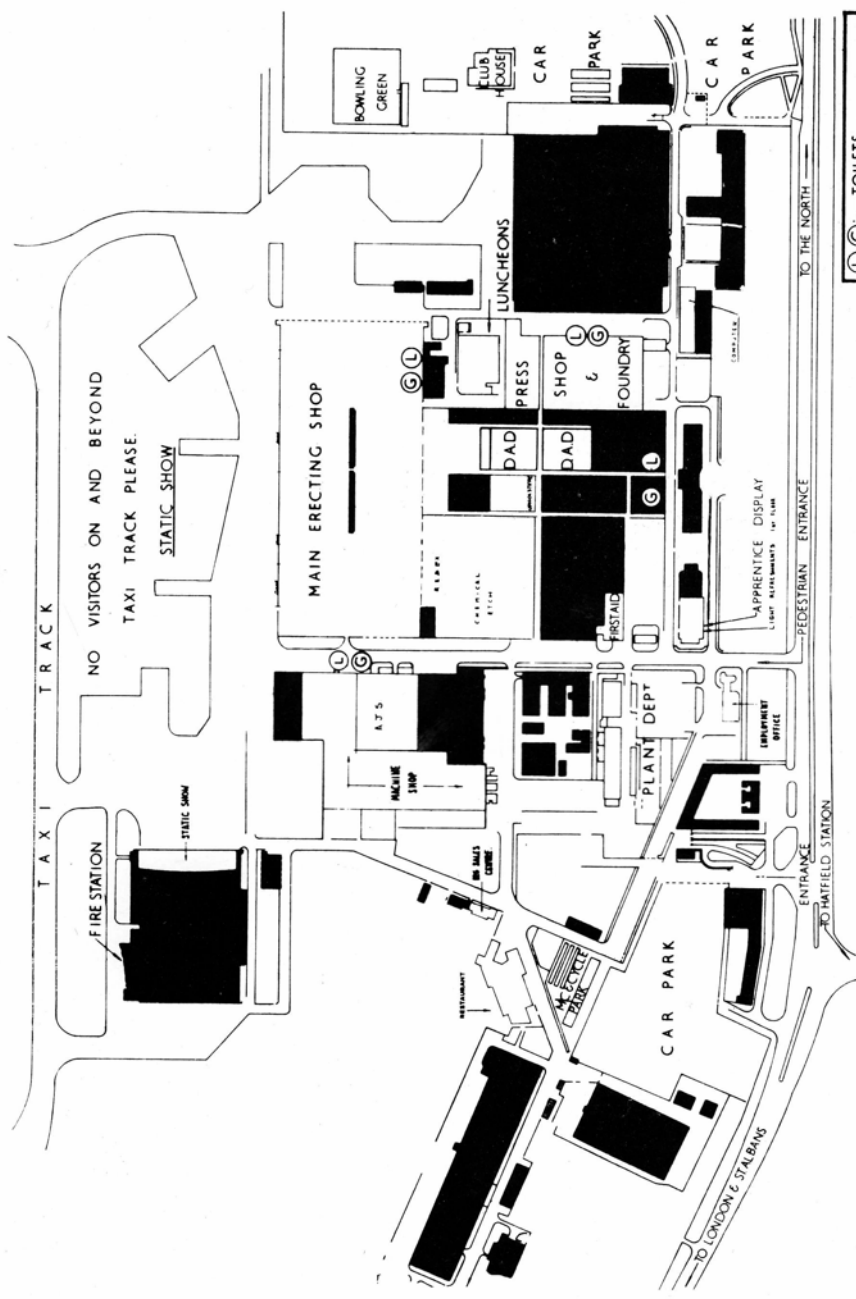
The HS Nimrod, the world's first four-jet maritime reconnaissance aircraft, will enter service with R.A.F. Coastal Command in 1969.



The Hawker Siddeley Harrier GR Mk I will be the first operational fixed-wing V/STOL aircraft in the world.



The longer-range Trident Two, now in production at Hatfield for British European Airways, is equipped for fully automatic landing in near-zero visibility.



(L) (G) — TOILETS  
 NO ADMITTANCE TO DEPARTMENTS  
 SHOWN THUS: [Symbol]

1:1250 1/4" = 1"

The Hatfield factory of Hawker Siddeley Aviation Limited employs about 6,000 people and is primarily engaged in the design, development, manufacture and sale of the Trident jet airliner and its derivatives and design of the A-300 European Airbus in conjunction with French and German partners. Hatfield is the centre of Hawker Siddeley's civil aircraft activities and is also responsible for the sale of such aircraft as the successful HS 125 business jet and the HS 748 turbo-prop transport; and the continued support of the many civil aircraft of earlier de Havilland manufacture.

The HS 125 and HS 748, of which together more than 330 have been sold in many parts of the world, are manufactured respectively in Hawker Siddeley's Chester and Manchester factories, each of which has more than a million square feet of floor area. Other Hawker Siddeley Aviation factories include the Company's headquarters at Kingston-upon-Thames, Brough (East Yorkshire) and the smaller establishments at Hamble, Bitteswell and Dunsfold.

The Aviation Company itself is part of the powerful Hawker Siddeley Group, whose employed capital exceeds £150 million and which has more than 100,000 employees including those in the subsidiary Companies in other parts of the world. The scale of the Group's operations can be gauged by its turnover of approximately £1 million a day.

It can be seen that the Group, broadly based as it is across a whole range of varied industries, has the strength to sustain the immense potential of the aerospace industry.

There is at Hatfield, as well as at the other Hawker Siddeley Aviation factories, a continuous requirement for employees of all grades, particularly for qualified aeronautical engineers as well as skilled operators. The Employment Office will be open throughout the morning to answer inquiries.

## Aircraft on View

Amongst the vintage and modern aircraft on display it is hoped that the following will be present:

Tiger Moth	Hart	Dove
Gipsy Moth	Hurricane	HS 125
Cirrus Moth	Mosquito	Trident
Fox Moth	Chipmunk	Sea Venom
Puss Moth	Canberra	Hunter
Leopard Moth	Turbi	Meteor
Hornet Moth	Vampire Trainer	Rapide
Moth Minor	Gnat Trainer	Pup
Beaver	Vulcan	Taylorcraft
Blackburn B2	Shackleton	Prentice

Some of the above aircraft will give a flying display at approximately 11 a.m. for one hour. There will be a further flying display at 2.15 p.m. lasting about two hours, but the factory buildings will have closed at 1 p.m.

**Hawker Siddeley Aviation**

# FLYING DISPLAY



# HATFIELD OPEN DAY

**SATURDAY JULY 13th 1968**

THE PROCEEDS FROM THE SALE OF THIS PUBLICATION WILL BE DONATED TO THE R. A. F. BENEVOLENT FUND IN THIS THE 50TH ANNIVERSARY OF THE ROYAL AIR FORCE.



**6d**



**HS 125**

The modern business tool with world-wide sales - to date 150 sold - span 47 ft. 5 ins.



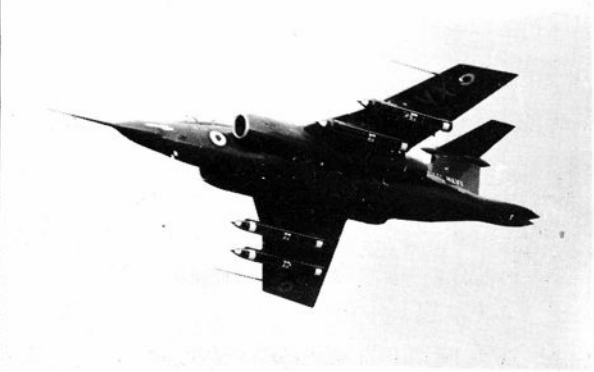
**HAWKER HART**

A single engine high performance day bomber of the mid 1930s - span 37 ft. 4½ ins.



**HS NIMROD**

The world's first jet maritime reconnaissance aircraft for service with the Royal Air Force 1969 - span 114 ft. 10 ins.



**HS BUCCANEER**

A low level strike reconnaissance aircraft - carries various missile loads - span 42 ft. 4 ins.



**CIRRUS MOTH (DH60)**

A private owner aircraft of 1925 - the first of famous family winning many famous records - span 29 ft. 0 in.



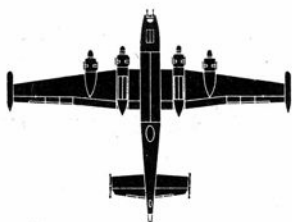
**HAWKER TOMTIT**

One of the line of many famous Hawker biplanes - span 28 ft. 7 ins.



**MOSQUITO (DH98)**

The Mosquito was de Havilland's main contribution to 1939-45 War - a few still fly to-day - span 54 ft. 2 ins.



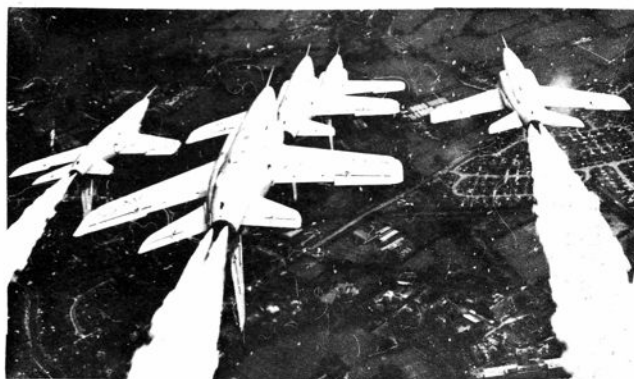
**HS SHACKLETON**

4 engine maritime reconnaissance aircraft in service with the Royal Air Force - capable of long endurance - span 120 ft.



**HS 748**

Twin engine prop jet airliner - rugged and economical with remarkable field performance - span 98 ft. 6 ins.



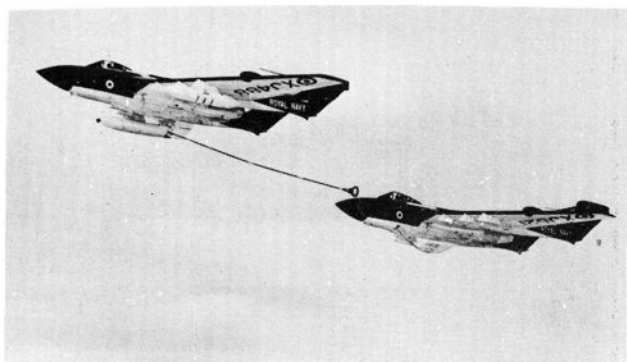
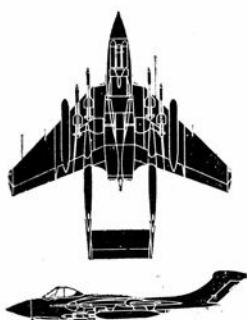
**GNAT**

A two seat advanced jet trainer of the Royal Air Force - flown by the R. A. F. Aerobatic Team - the Red Arrows span 21 ft. 1 in.



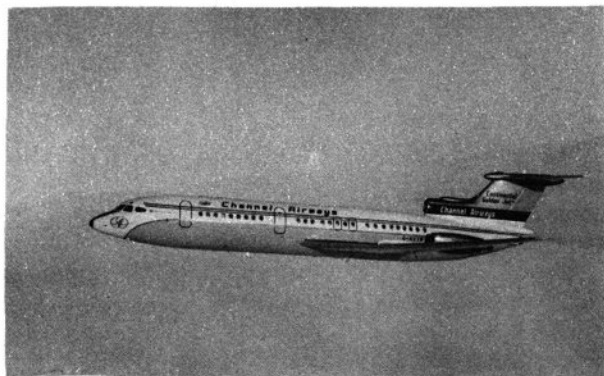
**METEOR**

Held the World speed record at 605 mph in 1945 - many versions built - served with many Air Forces - span 37 ft. 2 ins.



**HS SEA VIXEN**

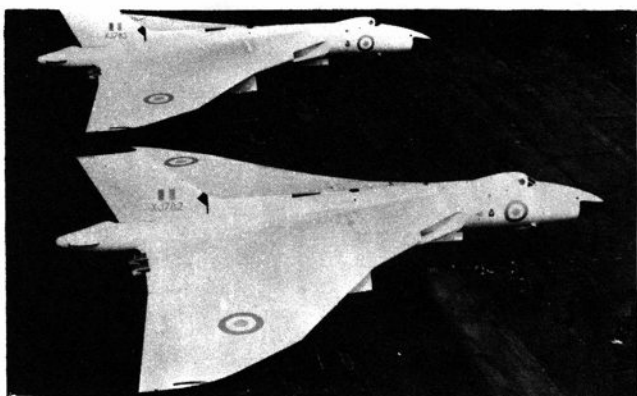
An all weather transonic strike fighter of the Royal Navy - can be flight refuelled - span 50 ft. 0 in.



**HS TRIDENT 1E**  
600 mph Trident is the world's most advanced regional jet airliner - shown in Channel Airways livery - span 95 ft. 0 in.



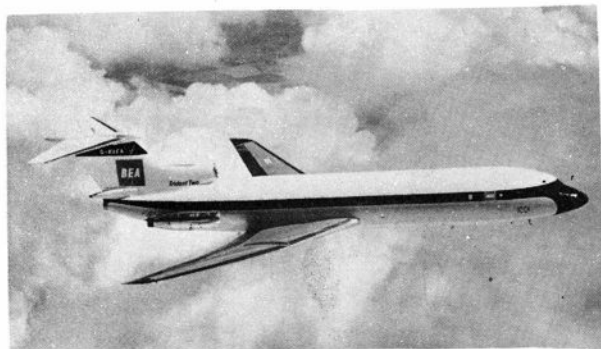
**HS HARRIER**  
The world's first operational V/STOL tactical strike fighter will enter service with the R. A. F. in 1969 - span 25 ft. 3 in.



**HS VULCAN**  
A four jet Delta wing bomber in service with R. A. F. Strike Command - span 111 ft. 0 in.



**RAPIDE (DH89)**  
The de Havilland twin engine express airliner - world famous - many built - span 48 ft. 0 in.



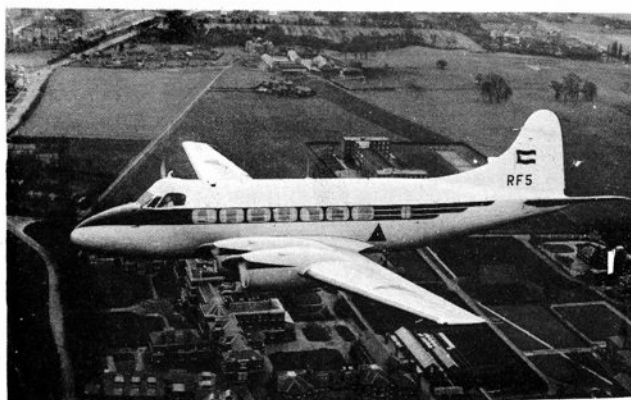
**HS TRIDENT 2E**  
 Latest version of the Trident jet airliner to enter service with British European Airways - span 98 ft. 0 in.



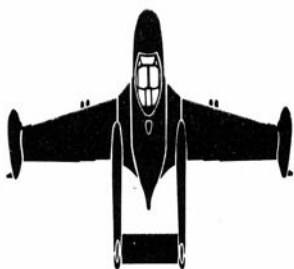
**TIGER MOTH (DH82)**  
 An efficient primary intermediate and advanced training biplane - many pilots learnt to fly in the aeroplane - span 29 ft. 4 ins.



**DOVE (DH104)**  
 Twin engine airliner in miniature - some 540 built - span 57 ft. 0 in.

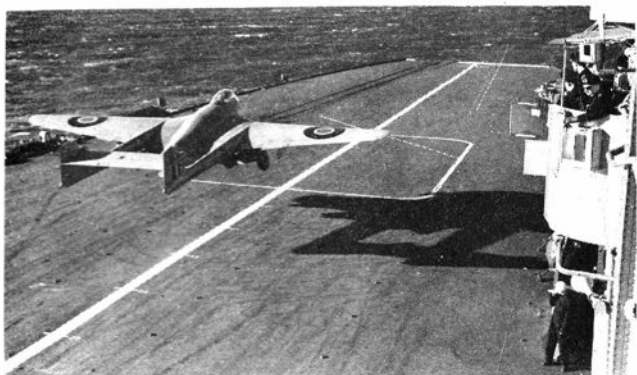
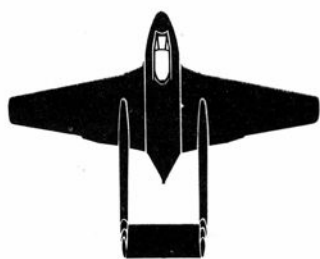


**HERON (DH114)**  
 4 engine airliner 14 - 17 passengers - fixed and retractable undercarriage versions - span 71 ft. 6 ins.



**SEA VENOM**

Naval 2 seat jet strike carrier-borne aircraft - used by Royal Navy and Royal Australian Navy - span 41 ft. 9 ins.



**SEA VAMPIRE**

The world's first jet fighter to land upon an aircraft carrier in December 1945 - span 38 ft. 0 in.



**BLACKBURN B2**

The first metal constructed biplane side-by-side seating - flew in 1932 - span 30 ft. 2 ins.



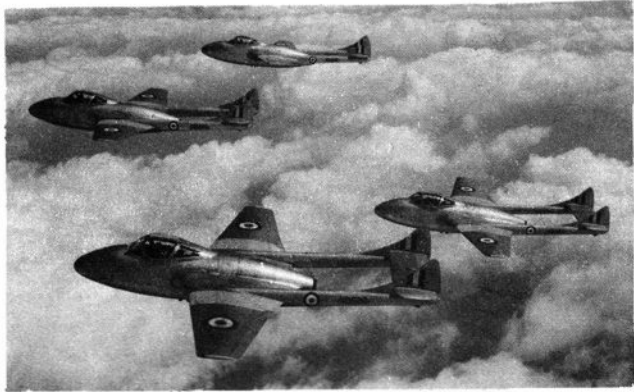
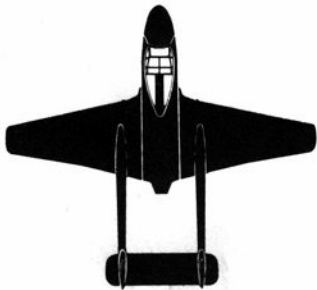
**LEOPARD MOTH (DH85)**

Sir Geoffrey's favourite aeroplane - built in 1933 as a private aircraft - span 37 ft. 6 ins.



**HS ANDOVER**

Twin engined strategic support aircraft of Royal Air Force Air Support Command - span 98 ft. 0 in.



**VAMPIRE T. 11**

A two seat advanced jet trainer used by 20 world Air Forces - span 38 ft. 0 in.



**COMET 4C**

Four jet strategic transport flown by No. 216 Sqn. R. A. F. Air Support Command - span 114 ft. 9 ins.



**CHIPMUNK**

The first design of DH Canada - a primary trainer - over 1000 built here in England - span 34 ft. 4 ins.

# Aircraft Log

TYPE	REGISTRATION



**Hawker Siddeley Aviation**

LARGEST AEROSPACE COMPANY IN EUROPE

HAWKER SIDDELEY AVIATION LIMITED

HATFIELD FLYING DISPLAY

13th July, 1968.

Subject to availability of the participating aircraft and reasonable weather conditions, it is hoped that the following programme will take place. All times are approximate and may have to be altered at short notice, but those changes will be announced over the loudspeakers.

MORNING DISPLAY STARTING 11.00

<u>AIRCRAFT</u>	<u>REGI- STRATION</u>	<u>PILOT/OWNER</u>	<u>DISPLAY TIME</u>	
			<u>T/O</u>	<u>LAND</u>
Vulcan B2		Sq.Ldr.Parker/R.A.F.Cottesmore		11.00
<u>MOTH BALL</u>				
Cirrus Moth	G-EBLV	Mr.Clear/H.S.A. Hatfield	11.05	
D.H.60G Moth	G-ABYA	Mr.Morris/Mr.Everdell		
Puss Moth	G-ABLS	Mr.Lovell		
Leopard Moth	G-ACMN	Mr.Parkes		
Leopard Moth	G-APKH	Joan Hughes/Mr.Goodchild		
Hornet Moth	G-AHBL	Dr.Hamilton.		
Hornet Moth	G-ADND	Mr.Reiss		
Moth Minor	G-AFPN	Mr.Elkin/Mr.Harris		
Moth Minor	G-AFOJ	Mr.Long		
Tiger Moth	G-APVP	Mr.W.Smith		
Chipmunk	G-AOST	Mr.R.Smith		11.30
<u>VINTAGE</u>				
Rapide	G-AKIF	Tommy Thompson	11.30	
Blackburn B2	G-AEBJ	Don Headley/H.S.A. Brough	11.33	11.38
Hawker Tomtit	K 1786/ G-AFTA	Hector Taylor/Shuttleworth	11.39	11.44
Hawker Hart	J 9941/ G-ABMR	Duncan Simpson/H.S.A. Dunsfold	11.45	11.50
Hawker Hurricane	PZ 865/ G-AMAU	Sq.Ldr.Mills/H.S.A.Dunsfold	11.51	11.56
Mosquito T3	RR 299	Pat Fillingham/H.S.A. Hatfield	11.57	12.02
Beaver Srs.2	G-ANAR	Mr.Williams/Alvis	12.03	12.07
Spitfire		R.A.F.Coltishall	12.08	12.13
Rapide	G-AKIF	(Parachute Jump)	12.15	12.20
H.S.125	G-ATWH	Mr.Pike/H.S.A. Hatfield arrival and land		12.30

AFTERNOON DISPLAY STARTING 14.15

<u>AIRCRAFT</u>	<u>REGIS- TRATION</u>	<u>PILOT</u>	<u>UNIT</u>	<u>DISPLAY</u>	<u>DISPLAY T/O</u>	<u>TIME LAND</u>
<u>FLEET AIR ARM</u>						
Sea Venom		Mr.Slade	Air Director School	Flypasts	14.15	14.20
Vampire T.22		Mr.Firth	Air Director School	Flypasts	14.21	14.26
Sea Hawk						
FGA 6	XE 390	Mr.Carter	F.R.U. Hurn	Flypasts	14.27	14.32
Hunter FGA.11		Lt.Sheridan	Stn.Flt. Yeovilton	Flypasts	14.33	14.36
<u>ROYAL AIR FORCE</u>						
Chipmunk	WP 861	Flt.Lt.Wilson	London U.A.S.	Aerobatics	14.37	14.41
Meteor F.8	WH 291	Flt.Lt.Woodham	85 Squadron	Flypasts	14.42	14.48
Jet Provost		Flt.Lt.King	C.A.W.	Aerobatics	14.49	14.57
Hunter F6		F/O Dacre	229 O.C.U.	Aerobatics	14.58	15.08
Vulcan B2		Sq.Ldr.Parker	Cottesmore	Flypasts	15.09	15.17 (dep)
<u>HAWKER SIDDELEY AVIATION LIMITED.</u>						
H.S.125	G-ATWH	Geoffrey Pike	H.S.A.	Flypasts	15.18	15.23
H.S.748		Tony Blackman	H.S.A.	Flypasts	15.24	15.30

.....