



The de Havilland Aeronautical Technical School Association



MEMORIALS of de HAVILLAND PEOPLE AND PLACES

Introduction

This list is based on that published in the Hatfield Aviation Association Newsletter Autumn 2005, reproduced in DHAeTSA Newsletter Spring 2006. It was compiled by the de Havilland Heritage Committee, headed by the late John Martin. It has been updated and the scope has been extended to cover memorials such as awards and oral histories, also place names and sources of information. It is still in draft format, with more information to be obtained.

Images

Where a numbered item show a thumbnail image, clicking on it will go to a larger image. Clicking on that image will return you to the thumbnail page.

Locations

Where practical, a post code is given. Where that may not be precise enough, or where there is no code (e.g. at Seven Barrows), the Ordnance Survey map reference and lat/long co-ordinates are given, also a mapcode. All satnav devices can accept lat/long as well as post codes. TomTom devices recognise mapcodes as well as postcodes. [Mapcodes can be used and generated at www.mapcode.com In 'I have a mapcode' use GBR, e.g. GBR J9L.RPQ (Note space after GBR and dot between character groups. By default the location opens in Google Maps, from where Street View or Satellite View can selected, or one can choose at bottom of screen to display as TomTom map, Bing Map and others (not all work).]

Abbreviations

DHAM	de Havilland Aircraft Museum
deHMC	de Havilland Moth Club
DHSL	de Havilland Support Ltd
DHET	de Havilland Engineering Trust
RAeS	Royal Aeronautical Society

NOTE

Sir Geoffrey de Havilland died on 21st May 1965, aged 82. His ashes were released from a Trident, piloted by John Cunningham, over Seven Barrows, site of his first successful flight.

Compiled by Roger de Mercado, Secretary, de Havilland Aeronautical Technical School Association.

Draft No. 4 published on www.dhaetsa.org.uk January 2018

CONTENTS**Site Memorials**

	Page		Page
1. de Havilland gravestones	3	29. Mosquito Aircrew and Groundcrew memorial, DHAM	7
2. Geoffrey Raoul de Havilland memorial.	3	30. Leavesden Airfield memorial	7
3. John Derry and Tony Richards gravestone	3	31. John Derry Technology Centre, Charterhouse School	7
4. John Scrope gravestone	3	32. de Havilland Arms pub, Fleet, Hampshire	7
5. Memorial to six de Havilland employees killed by German bombs	3	33. D.H.112 Venom on mast, Wantage, Oxfordshire	7
6. Plaque on Geoffrey de Havilland's birthplace	3		
7. Plaque where Geoffrey de Havilland lived 1909-1910	3	Other memorials	
8. Geoffrey de Havilland First Flight memorial	4	de Havilland-related street names in Hatfield	8
9. Memorial Plaque commemorating the Stag Lane site	4	de Havilland-related street names elsewhere	8
10. Stag Lane Heritage Trail, Mollison Way, Edgware	4	de Havilland-related awards	
11. Sir Geoffrey de Havilland statue, University of Herts. College Lane	4	August 23rd Memorial Award	9
12. Plaques at University of Hertfordshire College Lane Campus.	4	Derry & Richards Award	9
13. John Cunningham memorial plaque, DHSL, Duxford	4	RAeS Hatfield Branch Awards	9
14. John Cunningham memorial display, DHAM	4	de Havilland Engineering Trust Awards	10
15. John Cunningham bust, RAF Bentley Priory	5	de Havilland Moth Club Trophies	10
16. John Cunningham memorial bell, St Mary's church, Kinsbourne Green	5	de Havilland Philharmonic Orchestra	10
17. de Havilland Original Head Office at DHSL, Duxford	5	de Havilland history on the internet	10
18. Frank Halford memorial plaque, DHAM	5	Oral Histories on the internet	10
19. "Birthplace of the Jet Airliner – The de Havilland Comet" road signs	6	Books	10
20. Hatfield Airfield memorial	6		
21. Dedication plaque on University of Hertfordshire de Havilland Campus	6	Large images	11-20
22. Hatfield aerodrome beacon, University of Herts. de Havilland Campus	6		
23. Hatfield Aerodrome Heritage Trail	6		
24. Hatfield flight test hangar	6		
25. Clarkson Court, Tamblin Way, Hatfield	6		
26. Walk of Memories outside former DH Admin Block, Hatfield	7		
27. DH 88 Comet, Comet Hotel, Hatfield	7		
28. de Havilland-related establishment names around Hatfield	7		

1. Geoffrey Raoul and John de Havilland rededicated gravestone, also Lady Louie de Havilland re-dedicated gravestone, including reference to Sir Geoffrey de Havilland, St Peter's Church, Tewin, Herts. Postcode AL6 0JW is close. Original gravestones are at DHAM. GR deH died in DH108 27 Sep 1946. J deH (and John Scrope) died in Mosquito collision 23 Aug 1943.



2. Geoffrey Raoul de Havilland memorial. In main entrance to the former Admin Block, as originally located in 1948. Now Herts. Police HQ; no public access. Old photo (far right) from DH News October 1948. New photos from Herts Police November 2017.



3. John Derry and Tony Richards gravestone, St Mary's church, Knebworth, Herts. In area between Lych Gate and west gate. Postcode SG3 6EY. [Died in DH110 6 Sep 1952]



4. John Scrope gravestone - flight observer killed in Mosquito with John de Havilland. War Graves Commission Hatfield Park cemetery, A1000, Hatfield, Herts. Headstone has shoulder cutouts to designate civilian. NB Not to be confused with War Memorial opposite railway station. Lat 51.758N, Long 0.218W. OS map ref. TL 231 081. Mapcode J9L.RPQ. Picture shows entrance from road.



5. Memorial to six de Havilland employees killed by German bombs at Hatfield in October 1940 and whose bodies were not recovered, St Luke's church, Hatfield. Memorial restored in 2004 by funeral directors J J Burgess. Postcode AL10 0EH. 21 people were killed, including some DHAeTS students, when bombs hit the "94 shop". No picture.

6. Plaque on Geoffrey de Havilland's birthplace, Magdala House, (now Terriers Green House) Amersham Road, Terriers Green, High Wycombe. Green plaque sponsored by Wycombe District Council, designed and carved in green Welsh slate by local artist Martin Cook, unveiled on 27 July 2000 by Anne Essex (née de Havilland). House is opposite the Beech Tree pub. Privately-owned and not open to the public. Postcode HP13 5AJ. OS map ref. SU 882 950.



7. Plaque where Geoffrey de Havilland lived 1909-1910, placed by English Heritage at 32 Barons Court Road, London, W14. Postcode W14 9DY.



8. Geoffrey de Havilland First Flight memorial, Seven Barrows, Litchfield, Hampshire. West of A34, 80m along footpath. There is a short layby on that side of the A34. Lat 51.293, Long 1.338W. OS map ref SU 462 551. Mapcode 833.Y9L.



9. Memorial Plaque commemorating the Stag Lane site, on flats on de Havilland Road, Stag Lane, Edgware. Project conceived by Stuart McKay, Secretary, de Havilland Moth Club. Unveiled by Anne Essex & Susan Halford-Walker on 25 Sep. 2000, the 80th anniversary of the founding of the Company. Postcode HA8 5QF. Lat 51.5981N, Long 0.2716W. Mapcode 8K.VM4.



10. Stag Lane Heritage Trail, Mollison Way, Edgware. Devised by Steve Pollard of Stag Lane Primary School, there are six information boards about Stag Lane Aerodrome around the short dual carriageway stretch. Opened 2012. Postcode HA8 5QL. No pictures.

11. Sir Geoffrey de Havilland statue, University of Hertfordshire College Lane Campus, Hatfield. Inspired by Charles Caliendi. Sculpted by Keith Maddison. Unveiled 30 July 1997 by HRH the Duke of Edinburgh. Situated on path from entrance road to main reception. Postcode AL10 9AB. Lat 51.752N, Long 0.243W. Mapcode J9R.5CL.



12. Plaques at University of Hertfordshire College Lane Campus. (1) Wooden plaque 'In commemoration of Aviation Pioneer Sir Geoffrey de Havilland', carved by Stan Kimm. Provided by the Hatfield Branch of the Royal Aeronautical Society. (2) Metal plaque recording de Havilland 'Firsts', compiled by J M 'Mike' Ramsden. See page 12 for text. Unveiled 22 Sep 2010 by Anne Essex. Plaques were placed at rear of Prince Edward Hall. Present location not known. Postcode AL10 9AB. Access likely to be restricted.



13. John Cunningham memorial plaque, de Havilland Support Ltd, Duxford. Unveiled 28 April 2004 by Air Marshal Ian Macfadyen.



14. John Cunningham memorial display, de Havilland Aircraft Museum [Photo to be added] Display includes the Harmon Trophy, presented by Eisenhower in 1956. Postcode AL2 1BU

Note: John Cunningham's medals were auctioned for charity and are now kept in the Library of the Royal Air Force Club in Piccadilly, London.

15. John Cunningham bust, RAF Bentley Priory awarded annually to the flying scholarship cadet considered to be the best all-round individual pilot.



16. John Cunningham memorial bell, St Mary's church, Kinsbourne Green, Herts. Dedicated 22 Nov 2008 by the Bishop of Hertford after unveiling by Rob Cunningham. The bell was cast at Whitechapel Foundry. It is in an extension to the church built in 2008 and can be seen through a hatch. A miniature replica is mounted on the wall in the room below. Postcode AL5 3QE



17. de Havilland Original Head Office at Duxford and sign, also brass plates inside on floor marking siting of original offices. Adjacent to de Havilland Support Ltd. The Office ("Sir Geoffrey's Hut") was moved from Stag Lane to Hatfield, located in latter years near the Customer Centre (previously the London Aeroplane Club squash courts) where it housed DH memorabilia.



18. Frank Halford memorial plaque, de Havilland Aircraft Museum. Postcode AL2 1BU.



19. “Birthplace of the Jet Airliner – The de Havilland Comet” signs on entry roads to Hatfield, e.g. on A1001 approaching Comet Hotel. Instigated by David Newman.



20. Hatfield Airfield memorial, provided by Airfields of Britain Conservation Trust. Four-foot granite block, unveiled 29 Sep 2012 by Kenneth Bannerman, founder and director-General of ABCT. On Ellenbrook Fields, near western end of The Runway residential road. Lat 51.7616N, Long 0.2528W. Mapcode J9K.GX3



21. Dedication plaque on University of Hertfordshire de Havilland Campus, Hatfield. Unveiled in July 2000 by Anne Essex and Olivia de Havilland at the Fielder Centre, Manor Road. Wording and current location unknown.

22. Hatfield aerodrome beacon, near entrance to University of Hertfordshire de Havilland Campus. Retrieved from North Weald and restored by University of Hertfordshire (with Heritage Lottery funding and local support). ‘Unveiled’ 26 Sep 2013 by Grant Shapps. Postcode AL10 9EU. Lat 51.7615N, Long 0.2462W. Mapcode J9K.JLG



23. Hatfield Aerodrome Heritage Trail, created by University of Hertfordshire, sponsored by Club de Havilland, opened November 2010. Start point at Hatfield aerodrome beacon. Guide at www.dhaetsa.org.uk/dhaets/documents/101765_hatfield_aerodrome_heritage_trail.pdf.



24. Hatfield flight test hangar (‘The Comet Hangar’), Grade 2 listed. Now a David Lloyd Leisure Centre. Restricted access. Postcode AL10 9AX



25. Clarkson Court, Tamblin Way, Hatfield. Block of apartments adjacent to Comet Hangar. Postcode AL10 9GY. Plaque commemorates Richard Clarkson and his illustrious ancestor Thomas Clarkson.



26. Walk of Memories, leading from Comet Way to Police HQ (Formerly DH Admin Block), Hatfield. Funded by BAE Systems, designed by R D S 'Rod' Coleman. Six plaques, 12 ins square, each depicting two DH aircraft types. Postcode AL10 9SJ. Map code J9L.6XV. Guide at <www.dhaetsa.org.uk/dhaets/documents/103233_walk_of_memories_v3.pdf>



27. DH 88 Comet model surmounting engraved obelisk, Comet Hotel, Hatfield. Portland stone; designed by artist Eric Kennington, erected Dec 1936. The panels on the pillar depict natural and supernatural flight. Postcode AL10 9RH. Map code J9K.R6L



28. de Havilland-related establishment names around Hatfield: Club de Havilland sports & social club. de Havilland Bowls Club, Ellenbrook. De Havilland Primary School, Travellers Lane. 2202 (Hatfield and de Havilland Squadron Air Training Corps, Woods Avenue.



29. Mosquito Aircrew and Groundcrew memorial, de Havilland Aircraft Museum. It was sponsored by the Mosquito Aircrew Association (since disbanded), designed by R D S 'Rod' Coleman, built by I Rumney and unveiled in April 2005. It originally featured a propeller from a wartime Mosquito crash, but this was soon stolen. A fibreglass propeller was installed at a rededication in October 2016. Postcode AL2 1BU



30. Leavesden Airfield memorial, provided by Airfields of Britain Conservation Trust. Unveiled Four-foot granite block, unveiled 24 May 2013 by Kenneth Bannerman, founder and Director-General of ABCT. Not available for public viewing (inside Warner Bros complex).



31. John Derry Technology Centre, Charterhouse School. Opened in 1980. John Derry was an Old Carthusian. A photograph of him beside a DH108 is said to hang in the entrance hall of School House Hodgsonites. Postcode GU7 2DX. No public access. No picture.

32. de Havilland Arms pub, Fleet, Hampshire. So named because in 1912 Geoffrey de Havilland used the nearby Fleet Pond to test – successfully – the F.E.2 on floats. Postcode GU51 1HA. 'Coat of arms' is spurious.



33. D.H.112 Venom on mast, Wantage, Oxfordshire. Ex Swiss Air Force FB.54, painted in RAF markings. At roundabout on A417 at junction of Denchworth Rd and Downsview Rd. . Lat 51.600N, Long 1.430W. OS Map Ref SU 3937 8914. Mapcode 6XZ.QHR.



de Havilland-related street names in Hatfield:**On the aerodrome site in Salisbury Village:**

Named after people: Barlow Close, Bishop Square, Cunningham Avenue, Derry Leys, Errington Close, Fillingham Way, Goldsmith Way, Halford Court, Hearle Way, Richards Street, Tamblin Way, Waight Close, Walker Grove.

Named after aircraft: Albatross Way, Chipmunk Chase, Comet Way, Devon Mead, Dragon Road, Flamingo Close, Frobisher Way, Gypsy (sic) Moth Avenue, Horsa Gardens, Jetliner Way, Mosquito Way, Nimrod Drive, Oxford Place, Queen Bee Street, Salisbury Hall Drive, Tiger Moth Way.

Elsewhere in Hatfield: De Havilland Close and Vixen Court. Also, but not named after DH aircraft: Dove Court and Heron Way along with many other birds.

de Havilland-related street names elsewhere - a selection. All rendered as spelt! Some may have been inspired by Olivia de Havilland or have no connection at all.

De Havilland Way and De Havilland Place, Abbots Langley [near Leavesden site], Hertfordshire.

De Havilland Way, Witney, Oxfordshire. On site of the airfield where de Havilland ran a WW2 repair organisation.

De Havilland Way Lostock, Lancashire, also 'D Havilland Club' (sic), Farnworth. [Near Lostock site]

De Havilland Way, Christchurch, also Airspeed Road, off The Runway; and many roads named after aircraft. [Near Christchurch site]

Clarkson Surgery, De Havilland Road, Wisbech, Cambridgeshire [Thomas Clarkson, slave trade abolitionist and ancestor of Richard Clarkson, was from Wisbech.]

De Havilland Road in (1) Dereham, Norfolk; (2) Upper Rissington, Cheltenham; (3) Cardiff.

De Havilland Avenue in (1) Shortstown, Bedford; (2) Stockton on Tees; (3) Helderkruijn South Africa; (4) Strathmore Heights, Vic, Australia; (5) Westchester, California.

De Havilland Avenue Park, Air Ronge, Saskatchewan, Canada.

De Havilland Close, Hawkinge, Kent.

Dehavilland Close, Northolt, Gtr London

De Havilland Court in (1) Shenley, Herts; (2) Amersham, Bucks; (3) Lebus St, London; (4) Wisbech, Cambs.

de Havilland-related awards

August 23rd Memorial Award. Created after the Mosquito accident on August 23rd 1943 for the best apprentice of the year. John Martin stated that the first winner was Roger Brown, DH Engines, in 1947. Duncan Simpson won in 1948 and John Maynard received his award (ten shillings) in 1952 (for 1951?). Pylon Winter 1953 named D G A Brignell for 1952 and A G ‘Tony’ Roberts, Chester, for 1953. Awarded to Gerald Garratt, Chester, for 1961. Date of last award not known.

Derry & Richards Award, Honourable Company of Air Pilots (was Guild of Air Pilots and Navigators). Awarded to a pilot, not on active service, who has made an outstanding contribution in advancing the art and science of aviation. First awarded in 1954 to J H Heyworth, chief test pilot of Rolls-Royce [ref DH Gazette Feb 1955]. Past winners include Peter Bugge (1963), John Cunningham (1965), Duncan Simpson (1971), Pat Fillingham (1973) and Peter Sedgwick (1991). Photos from P Sedgwick.



FOR EXPERIMENTAL FLYING
PRESENTED BY
THE DE HAVILLAND
COLLEAGUES OF
JOHN DERRY & ANTHONY
RICHARDS & AWARDED TO
PETER A SEDGWICK
BY THE GUILD OF AIR
PILOTS AND AIR
NAVIGATORS
1991

RAeS Hatfield Branch Awards. [List may not be current.]

Bishop Award, for final year design project. “For an outstanding performance on the final year Design Project, awarded to the student achieving the highest grade in the subject.”



Bishop Trophy



John Cunningham Trophy

John Cunningham and John Houlder Flying Scholarships (funded by the Geoffrey de Havilland Flying Foundation). “For demonstrating outstanding flying skills on the Flying module of any Engineering course which involves Pilot Studies.”

Student Lecture Competition for the Goodrich Trophy.



Goodrich Trophy



John Houlder Trophy

Tony Fairbrother Award.

Blue Streak Prize. “For the best final year specialist Rocket Project.”

Branch Prize “For the best student in Aerospace Engineering for the academic year.”

Branch Aerospace Bursary. “For the best performing first year student on an aerospace degree course.”



IN MEMORIAM
JOHN DERRY
ANTHONY RICHARDS
6.IX.1952

de Havilland Engineering Trust Awards. Each year the Trust grants a number of awards to individuals who show merit in contributing to aviation heritage. Currently these include the McRobert Award to assist student pilots specifically learning to fly in the UK on vintage aircraft, such as the Tiger Moth, Chipmunk or Stampe, and the Amy Johnson Engineering Bursary to assist people in attending specialist engineering training courses or to undertake their licences as qualified licensed engineers.

de Havilland Moth Club Trophies.

The Club awards a number of trophies, some for winning specific competitions and others for endeavour. The most prestigious is the Geoffrey de Havilland Award for 'The Spirit of the Enterprise'. Other trophies with DH-related significance are named for John Cunningham, Alan S Butler, Arthur Hagg, Hubert Broad and Pat Fillingham, and for the Dove, the Heron, the Comet and Stag Lane. These and many others were usually awarded at the annual Rally, often held at Woburn Abbey. With the cessation of major rallies, some trophies are no longer awarded and others only on occasion.

de Havilland Philharmonic Orchestra (dHPO). Formed in 1969. Performances are in the Weston Auditorium, University of Hertfordshire, de Havilland Campus, Hatfield.

de Havilland history on the internet. There is a good article at www.rafmuseum.org.uk/research/archive-exhibitions/de-havilland-the-man-and-the-company.aspx

Oral Histories on the internet

University of Hertfordshire project at www.herts.ac.uk/heritage-hub/oralhistoryarchive/hatfield-aerodrome

Imperial War Museum on line: Peter Bugge (13460), John Cunningham (10729 & 16897), Bill Bowker (31700).

Imperial War Museum off line: Geoffrey de Havilland (17789, 18057, 18059).

Royal Aeronautical Society 'Soundcloud' collection at <https://soundcloud.com/aerosociety-podcast> Includes interviews with John Cunningham and Peter Bugge, also many other taped lectures and interviews.

Books

The only definitive history of the Company is 'D.H.', by C Martin Sharp. Second hand copies are fairly easy to find (look for the second edition).

Sir Geoffrey de Havilland's autobiography 'Sky Fever' is also fairly easy to find.

Mike Ramsden's 'Sir Geoffrey de Havilland' is a profile privately published in 2015, available from the DH Aircraft Museum.

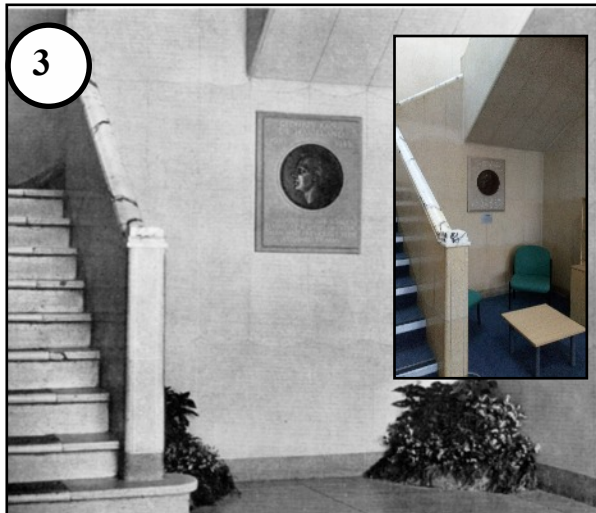
There are a great many books about de Havilland products, mostly about the aircraft. Search the internet by aircraft (or other product), or visit the bookshop of the DH Aircraft Museum in person or at www.dehavillandmuseum.co.uk Popular authors are Philip J Birtles and Martin Bowman, among others.



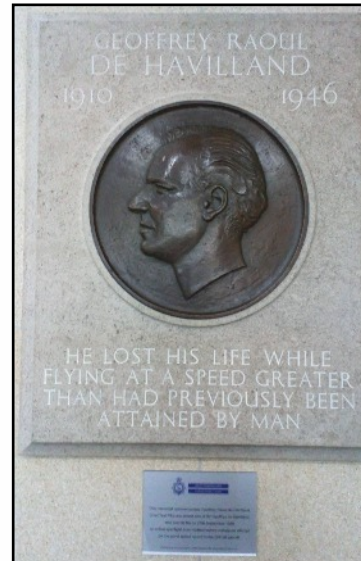
Photograph by Susan Hall, published on Herts CC 'Our Hatfield' website. Reproduced with her permission.



Photo from Key Publishing Aviation website forum.



Old photo from de Havilland News, October 1948. New photos, inset and right, from Herts Police November 2017.



Entrance to Hatfield War Graves Commission cemetery, A1000, site of John Scrope's grave. Google Street View.

JOHN DOUGLAS DERRY
D.F.C.
SQUADRON LEADER R.A.F.
AGED 30 YEARS
BELOVED HUSBAND OF EVE
—
ANTHONY MAX RICHARDS
GRAD. R.A.E.S
AGED 24 YEARS
ONLY BELOVED SON OF
ALBERT & AMY
—
KILLED AT FARNBOROUGH
6TH SEPTEMBER 1952.



6



7

Photographs above and right found on the internet.



8



From 'WW2Talk' website forum. Photos dated 2005.

The plaque reads:

THE SITE OF
 STAG LANE AERODROME
 FOUNDED IN 1916 BY THE L & P AVIATION Co.
 HOME TO THE
 DE HAVILLAND AIRCRAFT
 & ENGINE COMPANIES
 1920 -1971

Photograph from DHMC magazine, via Bruce Bosher.



9

SIR GEOFFREY DE HAVILLAND STATUE



The plaques below the statue read “Geoffrey de Havilland 1882 - 1965” and “Unveiled by his Royal Highness the Duke of Edinburgh KG KT 30 July 1997”

The plaque visible behind the statue reads:

"Sir Geoffrey de Havilland O.M. K.B.E A.F.C Hon.F.R.Ae.S. 1882-1965 Pioneer aeronautical engineer and aviator, who made Hatfield the centre of a world-renowned aviation enterprise.

From his first flight in 1910, with an aeroplane and engine of his own design, until his death in 1965, he and his team made outstanding contributions to the development of every aspect of aviation.

Prominent among his achievements were the Moth and the Gipsy engine, which together in the 1920s, led the club and private flying movement worldwide; the Mosquito, the Second World War bomber that was faster than any fighter; and the Comet, the world's first jet airliner powered by the Ghost, the world's first civil turbine engine. All bore the proud prefix D.H.

Geoffrey de Havilland, from his earliest days, encouraged the young in the new science of aeronautics, starting the D.H. Aeronautical Technical School, a forebear of the University of Hertfordshire.

The legacy of his achievement, with the team he inspires from the early powered flight through to supersonic speed and space travel, lives on long after his ashes were scattered from a de Havilland Trident airliner over the Hampshire field called Seven Barrows, where he made that first flight more than forty years before.”

Two plaques, one on each side, show bas relief plan views of D.H. aircraft.

Photograph on left from Bruce Boshier, 1997



The model was originally a Cirrus Moth, but after several vandalisms it was replaced by a Comet, as shown here.

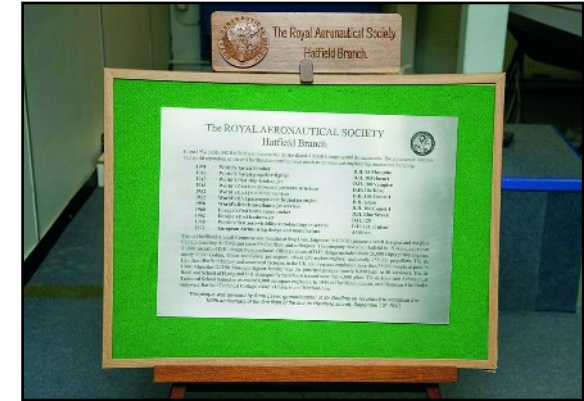
Photo Sep. 2017, Roger de Mercado

12 PLAQUES AT UNIVERSITY OF HERTFORDSHIRE COLLEGE LANE CAMPUS



Carved by Stan Kimm, RAeS Hatfield Branch

Photographs taken 22 Sep 2010, reproduced courtesy of Terry Richards Photography



The ROYAL AERONAUTICAL SOCIETY
Hatfield Branch

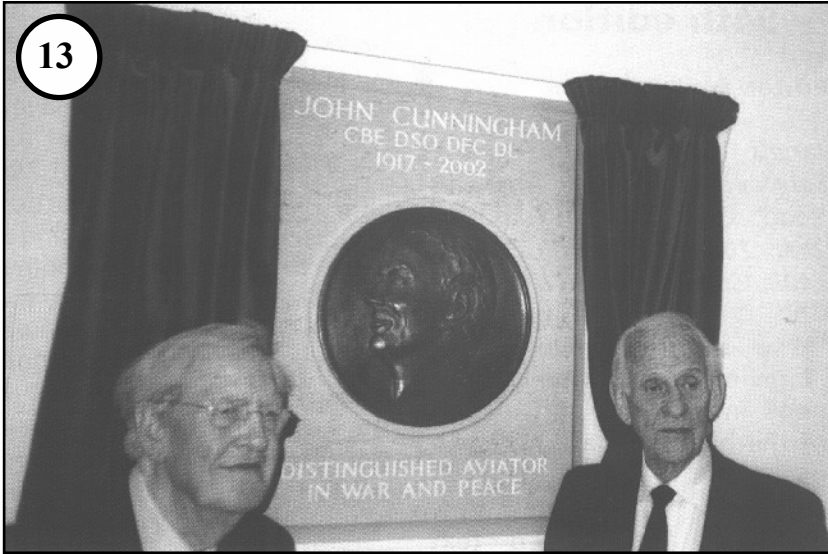


From 1934 until 1992 Hatfield was home to the de Havilland Aircraft Company and its successors. The commercial success and world reputation of the de Havilland companies owed much to aeronautical engineering innovation including:

- | | | |
|------|--|------------------|
| 1941 | World's fastest bomber | D.H. 98 Mosquito |
| 1943 | World's fastest propeller fighter | D.H. 103 Hornet |
| 1945 | World's first ship-landing jet | D.H. 100 Vampire |
| 1946 | World's first bonded-metal primary structure | D.H. 104 Dove |
| 1952 | World's first jet airliner services | D.H. 106 Comet 1 |
| 1952 | World's first passenger-certificated jet engine | D.H. Ghost |
| 1958 | World's first transatlantic jet services | D.H. 106 Comet 4 |
| 1960 | Europe's first heavy space rocket | D.H. Blue Streak |
| 1962 | Europe's first business jet | D.H. 125 |
| 1968 | World's first zero-visibility auto-landings in service | D.H. 121 Trident |
| 1972 | European Airbus wing design and manufacture | A300 etc. |

The de Havilland Aircraft Company was founded at Stag Lane, Edgware, in 1920 by pioneer aircraft designer and test pilot Captain Geoffrey de Havilland (later Sir Geoffrey) and colleagues. The company moved to Hatfield in 1934 and more than 31,000 aircraft of D.H. design were produced. Other products of D.H. design included about 26,000 Gipsy piston engines, nearly 9,000 Goblin, Ghost and Gyron jet engines, about 250 rocket engines, and nearly 155,000 propellers. The de Havilland Hatfield factory and associated factories in the UK and overseas employed more than 38,000 people at peak in 1944, when the D.H. 98 Mosquito fighter-bomber was the principal product (nearly 8,000 built in 40 versions). The de Havilland School of Flying and D.H. managed flying schools trained more than 6,000 pilots. The de Havilland Aeronautical Technical School trained an estimated 6,000 aerospace engineers. In 1944 de Havilland initiated, and Chairman Alan Butler endowed, Hatfield Technical College, today's University of Hertfordshire.

This plaque was unveiled by Anne Essex (granddaughter of Sir Geoffrey de Havilland) to recognise the 100th anniversary of the first flight of the first de Havilland aircraft, September 10th 1910.



13

A J 'Tony' Fairbrother, Flight Test Manager (left) and John W Wilson, Chief Operations Engineer.
Copy of photo by J M 'Mike' Ramsden.



16

Photograph from Philip Hepworth, 2009. He was Chairman of the Committee responsible for the extension to St Mary's and the provision of the bell.

Photograph of St Mary's, Kinsbourne Green, showing the new extension, from <https://hertfordshirechurches.wordpress.com/>

14

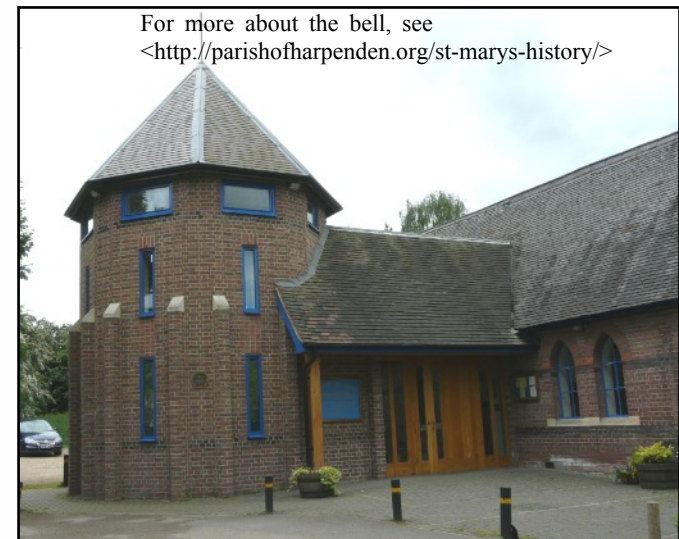
Reserved for photo(s) of JC exhibition/memorial at DHAM



15

John Cunningham bust, Bentley Priory Museum.
Photograph from the Museum Operations Manager, Oct. 2017

For more about the bell, see <http://parishofharpenden.org/st-marys-history/>



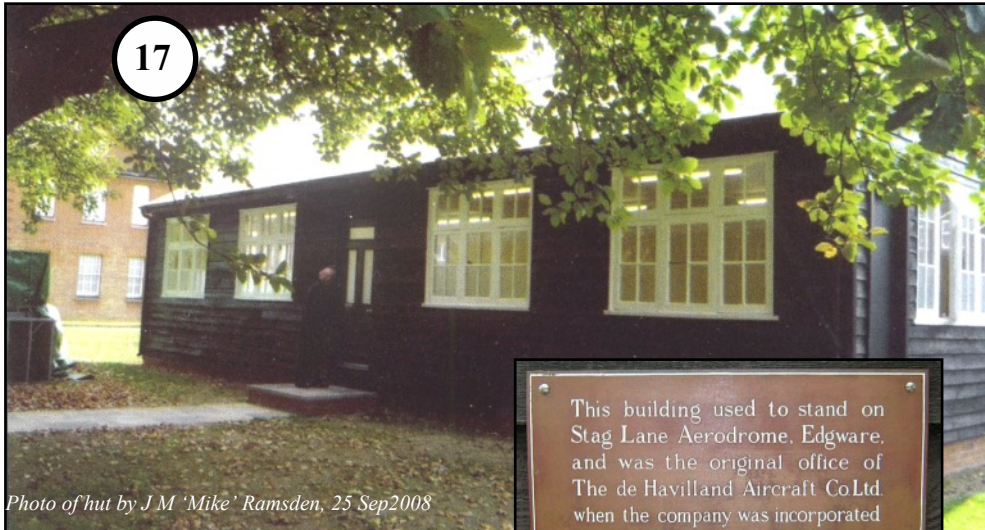
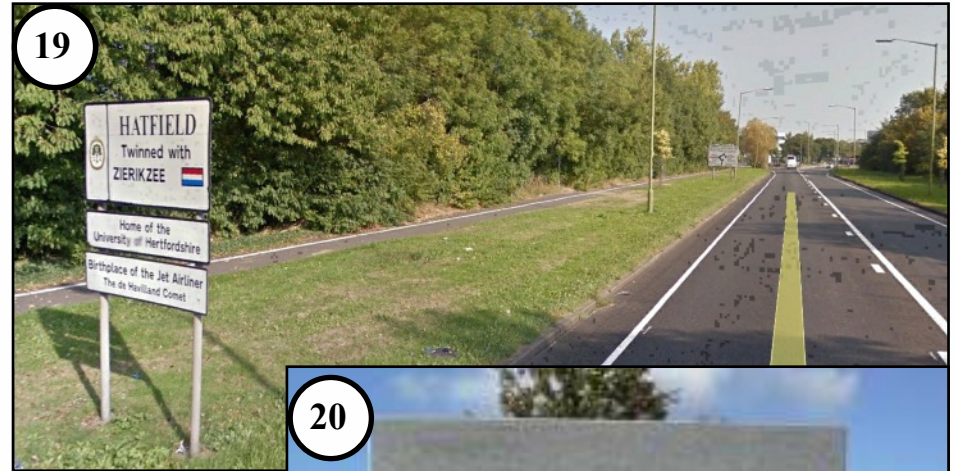


Photo of hut by J M 'Mike' Ramsden, 25 Sep 2008

This building used to stand on Stag Lane Aerodrome, Edgware, and was the original office of The de Havilland Aircraft Co Ltd when the company was incorporated on September 25, 1920.

Image of sign from Flypast Magazine website Dec. 2009.



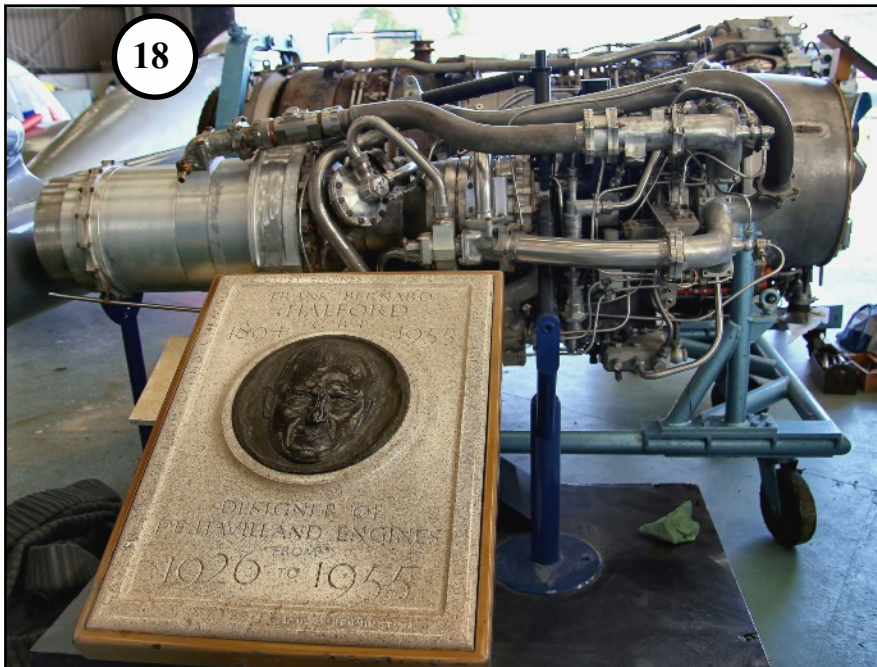
Google Street View approaching Comet roundabout on A1001 from the south.



Inscription reads:
 FRANK BERNARD
 HALFORD
 CBE
 1894-1955
 DESIGNER OF
 DE HAVILLAND ENGINES
 FROM
 1926 TO 1955.

Image found on the internet.

Photo Hatfield News 30 Sep 2012.





Photograph from Prof. Owen Davies, University of Hertfordshire, Nov. 2011.



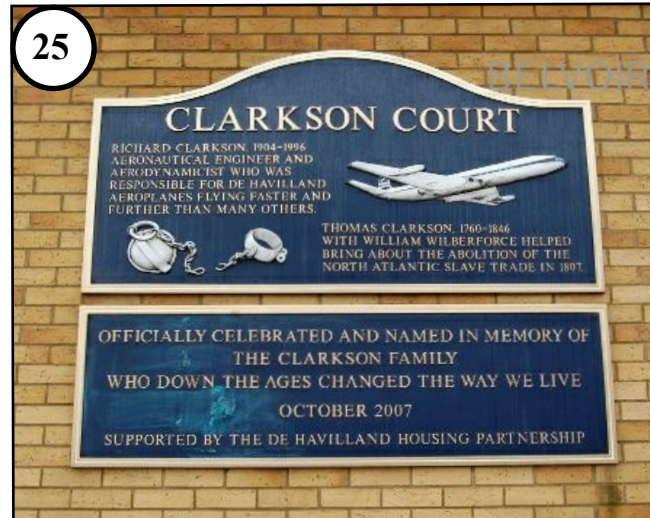
Photo 2006, Roger de Mercado



Photos Sep. 2017, Roger de Mercado



23



25

Photo from website of estate agent.

CLARKSON COURT

RICHARD CLARKSON 1904 - 1996
 AERONAUTICAL ENGINEER AND
 AERODYNAMICIST WHO WAS
 RESPONSIBLE FOR DE HAVILLAND
 AEROPLANES FLYING FASTER AND
 FURTHER THAN MANY OTHERS.

THOMAS CLARKSON 1760-1846
 WITH WILLIAM WILBERFORCE HELPED
 BRING ABOUT THE ABOLITION OF THE
 NORTH ATLANTIC SLAVE TRADE IN 1807.

OFFICIALLY CELEBRATED AND NAMED IN MEMORY OF
 THE CLARKSON FAMILY
 WHO DOWN THE AGES CHANGED THE WAY WE LIVE
 OCTOBER 2007
 SUPPORTED BY THE DE HAVILLAND HOUSING PARTNERSHIP



26



Club de Havilland

28



DE HAVILLAND BOWLS CLUB

Image of Club de Havilland, Bowls Club and School are from website www.hatfield-herts.co.uk

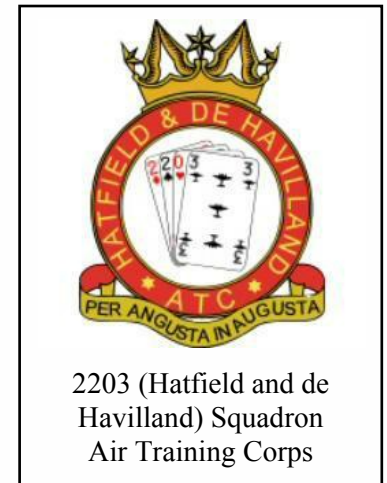


27

Photo copyright Nigel Cox and licensed for reuse under the Creative Commons Licence.



De Havilland Primary School



2203 (Hatfield and de Havilland) Squadron Air Training Corps



Reproduced from DH Aircraft Museum 'Gazette'.

International Mosquito Air and Ground Crew Memorial

In Memory of all Allied Mosquito Air and Ground Crews who serviced, flight tested and flew Mosquitos on worldwide operations during and after World War II.

Mosquitos were flown in a variety of roles, including bombing, pathfinding, unarmed photo reconnaissance, day and night intruders, night fighting, fighter/ground attack, precision bombing attacks, interdiction, ship busting and anti U-boat patrols, high speed courier operations, target towing and training.

The Mosquito was the most successful multi-role combat aircraft, engineered from wood and became known as the "Wooden Wonder". It was operated by two crew and was faster than most other allied or enemy aircraft of its time. The courage and dedication of both air and ground crews who flew and maintained the Mosquito was outstanding.



Unveiling ceremony: Kenneth Bannerman, left; Dan Dark, right
Video at <http://www.abct.org.uk/airfields/airfield-finder/leavesden/>

IN MEMORY OF
LEAVESDEN AIRFIELD
OPENED 08.12.1941
CLOSED 31.03.1994
DEDICATED TO ALL UNITS
AND PERSONNEL BASED HERE
AIRFIELDS
OF BRITAIN
Conservation Trust
www.abct.org.uk
UNVEILED BY
DAN DARK
SENIOR VICE PRESIDENT
WARNER BROS. STUDIOS LEAVESDEN
and
KENNETH P BANNERMAN
DIRECTOR GENERAL ABCT
24.05.2013



32

DE HAVILLAND ARMS, FLEET.
The “Coat of Arms” is a spurious generic image. Image from the internet.



33

Photo from the internet, ©Hamish Fenton 2009

Grove Technology Park is located at the former RAF Grove airfield. . After World War II Grove became the home base of No 3 Maintenance Unit that supplied and serviced the 2nd Tactical Air Force in West Germany in the 1950s. Parts and equipment for the Venoms in service with were stored at No 3 MU and flown out to deployed bases by RAF Transport Command. The park management had the Venom installed in October 2007, saying “The installation of a DH Venom in a prominent position at the entrance to the Grove Technology Park will provide a strong visual reminder of the technical heritage of the area, also providing a point of interest for our community.”